



Beverage Industry Solutions

OPTIMIZING BEVERAGE PRODUCTION WITH
INNOVATIVE POWERTRAIN SOLUTIONS



RESOURCES



ESG

**INDUSTRY
OBJECTIVES**



SAFETY



THROUGHPUT

REGAL REXNORD MISSION

- Regal Rexnord is committed to creating a better tomorrow with sustainable solutions that power, transit and control motion. For us, this means creating innovative solutions that focus on both customer needs and our commitment to sustainability.
- We understand the goals and challenges that beverage manufacturers face. Our wide range of powertrain product solutions aim to maximize equipment performance and enhance operating profits by reducing energy cost.

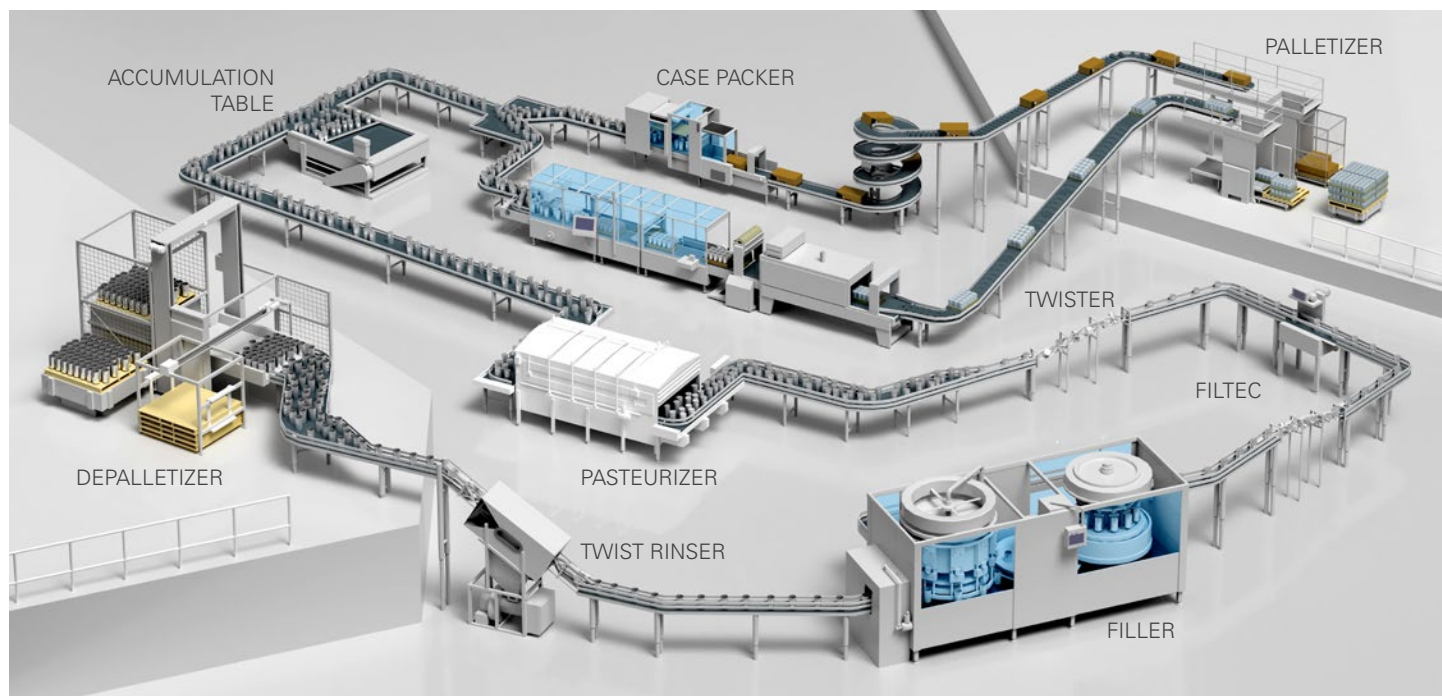
BEVERAGE INDUSTRY SOLUTIONS

Regal Rexnord line optimization solutions deliver beverage producers maximum productivity in their production lines with the lowest total cost of ownership, and the highest sustainable manufacturing benefits in the industry.

A powertrain solution can resolve beverage facility productivity and operating cost challenges caused by excessive water and lubrication usage, product damage and maintenance costs. With over 90 years of beverage production expertise, our Application Conveyor Experts and industry-leading portfolio of conveying chains and components, bearings, gearboxes, motors, clutches & brakes, and remote monitoring provide beverage manufacturers with the tools they need to enhance their production lines, simplify adherence to rigorous industry standards and achieve cost-competitiveness. Discover what makes Regal Rexnord a trusted advisor to leading beverage producers around the globe, and how our solutions cater to a variety of container types and sizes.

CAN FILLING

Within beverage processing, can filling encompasses a wide variety of products, including (but not limited to) carbonated soft drinks, energy drinks, alcoholic beverages like beers and seltzers, juices, and more. These production lines running at high speeds have thousands of cans being conveyed per minute, and this number continues to increase as consumer demand rises. The cans that run on these lines are produced in a diverse range of shapes and sizes, creating the need for more modern filling lines to convey these package types efficiently.



CAN FILLING APPLICATIONS

Regal Rexnord Products

Depalletizer	Rinser	Filler	Twister	Tunnel Pasteurizer	Accumulation Table	Filtec	Case Packer	Palletizer
--------------	--------	--------	---------	--------------------	--------------------	--------	-------------	------------

BEARINGS

Link-Belt™ & Sealmaster™ Mounted Ball Bearing (CRES and standard)

● ● ● ● ● ● ● ●

Rollway™ Unmounted Bearings

●

McGill Cam Followers

●

●

●

McGill CRES Cam Followers & Unmounted Bearings

●

Kilian™ "No Rust" Housed Bearing Units

●

●

●

●

●

●

Kilian Custom Bearings

●

●

●

●

●

●

CLUTCHES & BRAKES

Stromag™ Limit Switches

●

●

●

Warner Electric™ Magnetic Capping Headsets and Chucks

●

Warner Electric Electro Pack Clutch/Brakes

●

●

●

●

●

Warner Electric Wrap Spring Clutches

●

●

●

●

●

●

●

Stearns™ Electromagnetic Motor Brakes

●

●

Stearns SINPAC™ Electronic Start Switches

●

●

●

●

●

Rexnord Autogard™ Torque Limiters

●

●

Stieber™ Overrunning Clutches

●

CAN FILLING APPLICATIONS

Regal Rexnord Products

Depalletizer	Rinser	Filler	Twister	Tunnel Pasteurizer	Accumulation Table	Filter	Case Packer	Palletizer
--------------	--------	--------	---------	--------------------	--------------------	--------	-------------	------------

CONVEYING CHAINS & COMPONENTS

Rexnord™ Curve System with 1540 Series MatTop™ Chain	●						●	
Rexnord 1533 Series MatTop Chain	●						●	
Rexnord 1600 Series KleanTop™ Belt							●	
Rexnord 6997 Series MatTop Chain				●	●			
ValuGuide™ Bead Wall			●		●		●	
System Plast™ Nolu-S™/Nolu-SR™ Material	●	●	●		●		●	
ValuGuide Guide Rails	●	●	●	●	●		●	
ModSort™ Divert and Transfer Module							●	
System Plast™ 2120 Series Belt			●		●		●	
Rexnord 7700 Series MatTop™ Chain	●		●	●	●	●	●	●
Rexnord 880 & 882 Series TableTop™ Chain			●			●		
Rexnord 7950 Series MatTop Chain							●	
Rexnord 1873 SideGrip TableTop Chain [1873 Gripper Chain (TT)]		●	●			●		
Rexnord 820 Series TableTop Chain			●			●		
Rexnord 1500 Series MatTop Chain			●		●	●	●	
Rexnord 8500 Series MatTop Chain	●		●	●	●	●	●	●
System Plast NG™ Evo Chain	●	●	●		●		●	

GEAR & MOTOR

Bauer Gear Motor™ BG Series Inline Helical Geared Motor	●		●				●	
Bauer Gear Motor BF Series Shaft Mounted Geared Motor	●		●				●	
Bauer Gear Motor BK Series Helical Bevel Geared Motor	●	●	●	●	●		●	
Bauer Gear Motor BS Series Helical Worm Geared Motor	●	●	●		●		●	
Bauer Gear Motor HiflexDRIVE Standard Gear Motors			●		●		●	
Bauer Gear Motor HiflexDRIVE Aseptic Gear Motors		●	●	●	●		●	
Bauer Gear Motor HiflexDRIVE Stainless Steel Gear Motors		●	●	●	●		●	
Grove Gear™ WASHGUARD™ EL Platinum Series	●		●		●		●	
Grove Gear WASHGUARD Painted Gear Reducer	●		●	●	●		●	
Grove Gear WASHGUARD SS (Stainless Steel)		●	●		●		●	
Grove Gear Stainless Steel Ratio Multiplier			●				●	
HERA™ Stainless Steel Gear Drives		●	●	●	●		●	
Boston Gear™ 700 Series / QC700 Series	●		●		●		●	
Boston Gear Gen2 SS700 Series Stainless Steel Worm Gearbox		●	●		●		●	
Boston Gear SS2000R Helical Bevel Gear Drive		●	●	●	●		●	
Boston Gear SS2000 Series Helical In-Line Gear Drives			●				●	
LEESON™ Extreme Duck™ Ultra Motor		●	●	●	●		●	

INDUSTRIAL CHAIN & BELT DRIVES

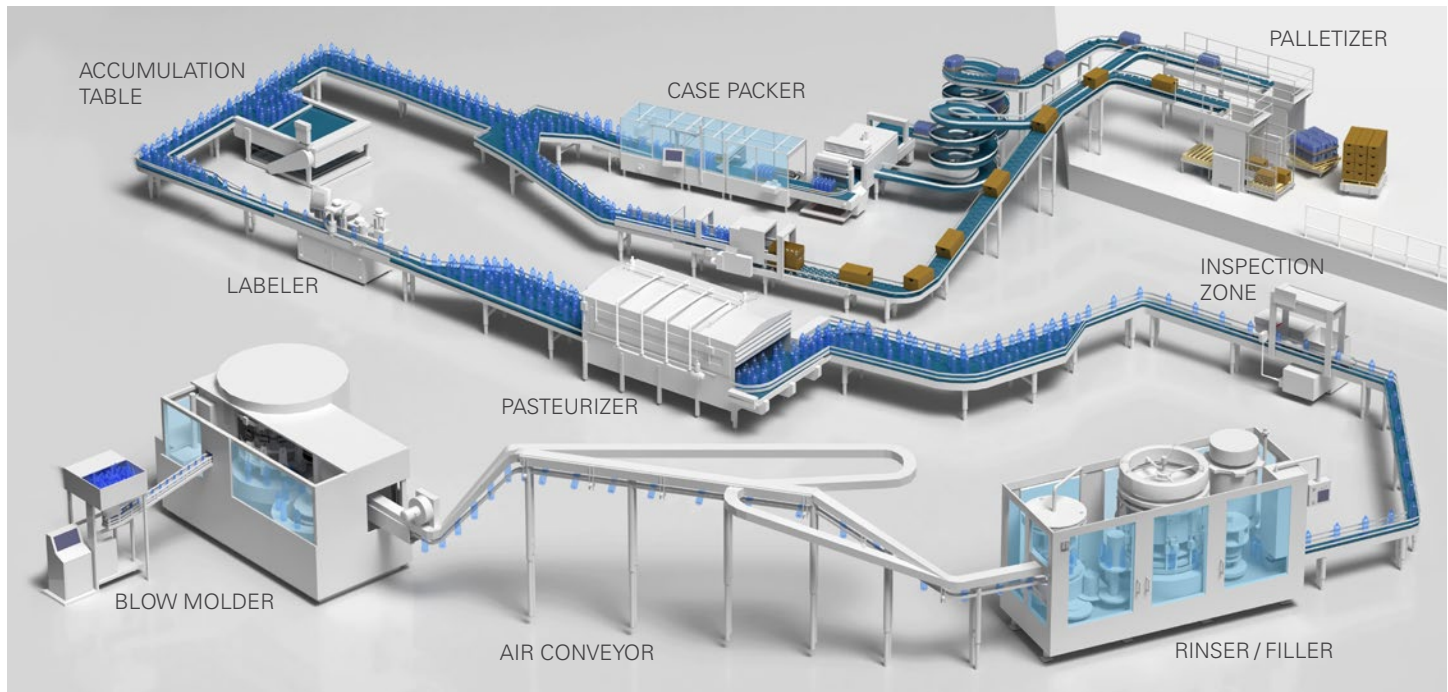
Rex™ Roller Chain	●	●	●		●	●	●	●
Link-Belt Roller Chain	●							●
RexPlus™ Roller Chain	●	●	●		●	●		●
TB Wood's™ Synchronous Belt Drives							●	●

PERCEPTIV™ INTELLIGENT RELIABILITY SOLUTIONS

Remote Condition Monitoring Services	●	●	●	●	●	●	●	●
--------------------------------------	---	---	---	---	---	---	---	---

PET BOTTLE FILLING

PolyEthylene Terephthalate (PET) bottle filling includes a lot more than just carbonated sodas, bottled water and other beverages – this production line can involve the filling and conveyance of products like cooking oils, cleaning agents, and more. As bottle shapes evolve and beverage manufacturers opt to reduce plastic usage and make bottles thinner, challenges like container tippage and the need for new equipment (updated molds, solutions with increased product stability, etc.) have arisen.



PET BOTTLE FILLING APPLICATIONS

Regal Rexnord Products

BEARINGS

	Depalletizer	Blow Molder	Filler	Rinser	Air Conveyor	Accumulation Table	Tunnel Pasteurizer	Labeler	Inspection Zone	Case Packer	Palletizer
Link-Belt™ & Sealmaster™ Mounted Ball Bearing (CRES and standard)	●		●	●	●	●	●	●		●	●
Rollway™ Unmounted Bearings			●								
McGill™ Unmounted Bearings		●									
McGill Cam Followers	●	●						●		●	●
McGill CRES Cam Followers & Unmounted Bearings			●								
Kilian™ "No Rust" Housed Bearing Units	●		●	●	●	●	●	●		●	●
Kilian Custom Bearings	●	●		●	●	●	●	●	●	●	●

CLUTCHES & BRAKES

Stromag™ Limit Switches	●									●	●
Warner Electric™ Magnetic Capping Headsets and Chucks			●								
Warner Electric Electro Pack Clutch/Brakes			●	●		●	●			●	
Warner Electric Wrap Spring Clutches	●	●	●	●	●	●	●	●	●	●	●
Stearns™ Electromagnetic Motor Brakes				●	●				●	●	
Stearns SINPAC™ Electronic Start Switches	●	●	●	●	●	●	●	●	●	●	
Rexnord Autogard™ Torque Limiters		●	●	●				●		●	
Stieber™ Overrunning Clutches			●								

PET BOTTLE FILLING APPLICATIONS

Regal Rexnord Products

Depalletizer	Blow Molder	Filler	Rinser	Air Conveyor	Accumulation Table	Tunnel Pasteurizer	Labeler	Inspection Zone	Case Packer	Palletizer
--------------	-------------	--------	--------	--------------	--------------------	--------------------	---------	-----------------	-------------	------------

CONVEYING CHAINS & COMPONENTS

Rexnord™ Curve System with 1540 Series MatTop™ Chain	●								●	
Rexnord 1533 Series MatTop Chain	●								●	
Rexnord 1600 Series KleanTop™ Belt									●	
Rexnord 6997 Series MatTop Chain					●	●				
ValuGuide™ Bead Wall			●		●				●	
System Plast™ Nolu-S™/Nolu-SR™ Material	●		●	●	●		●	●	●	
ValuGuide Guide Rails	●	●	●	●	●	●	●	●	●	
ModSort™ Divert and Transfer Module									●	
System Plast 2120 Series Belt			●		●				●	
Rexnord 7700 Series MatTop Chain	●		●		●	●		●	●	●
Rexnord 880 & 882 Series TableTop™ Chain			●				●	●		
Rexnord 7950 Series MatTop Chain									●	
Rexnord 1873 SideGrip TableTop Chain [1873 Gripper Chain (TT)]			●	●				●		
Rexnord 820 Series TableTop Chain			●				●	●		
Rexnord 1500 Series MatTop Chain			●		●				●	
Rexnord 8500 Series MatTop Chain	●		●		●	●	●	●	●	●
System Plast NG™ Evo Chain	●		●	●	●		●	●	●	
Rexnord Dry Run Metal TableTop							●	●		

GEAR & MOTOR

Bauer Gear Motor™ BG Series Inline Helical Geared Motor	●	●	●				●	●	●	
Bauer Gear Motor BF Series Shaft Mounted Geared Motor	●	●	●				●	●	●	
Bauer Gear Motor BK Series Helical Bevel Geared Motor	●	●	●	●		●	●	●	●	
Bauer Gear Motor BS Series Helical Worm Geared Motor	●		●	●		●	●	●	●	
Bauer Gear Motor HiflexDRIVE Standard Gear Motors			●			●	●	●	●	
Bauer Gear Motor HiflexDRIVE Aseptic Gear Motors			●	●	●	●			●	
Bauer Gear Motor HiflexDRIVE Stainless Steel Gear Motors			●	●	●	●			●	
Grove Gear™ WASHGUARD™ EL Platinum Series	●	●	●		●	●	●	●	●	
Grove Gear WASHGUARD Painted Gear Reducer	●	●	●		●	●	●	●	●	
Grove Gear WASHGUARD SS (Stainless Steel)			●	●		●			●	
Grove Gear Stainless Steel Ratio Multiplier			●						●	
HERA™ Stainless Steel Gear Drives			●	●		●	●		●	
Boston Gear™ 700 Series / QC700 Series	●	●	●		●	●	●	●	●	
Boston Gear Gen2 SS700 Series Stainless Steel Worm Gearbox			●	●		●			●	
Boston Gear SS2000R Helical Bevel Gear Drive			●	●		●	●		●	
Boston Gear™ SS2000 Series Helical In-Line Gear Drives			●						●	
LEESON™ Extreme Duck™ Ultra Motor			●	●		●	●	●	●	

INDUSTRIAL CHAIN & BELT DRIVES

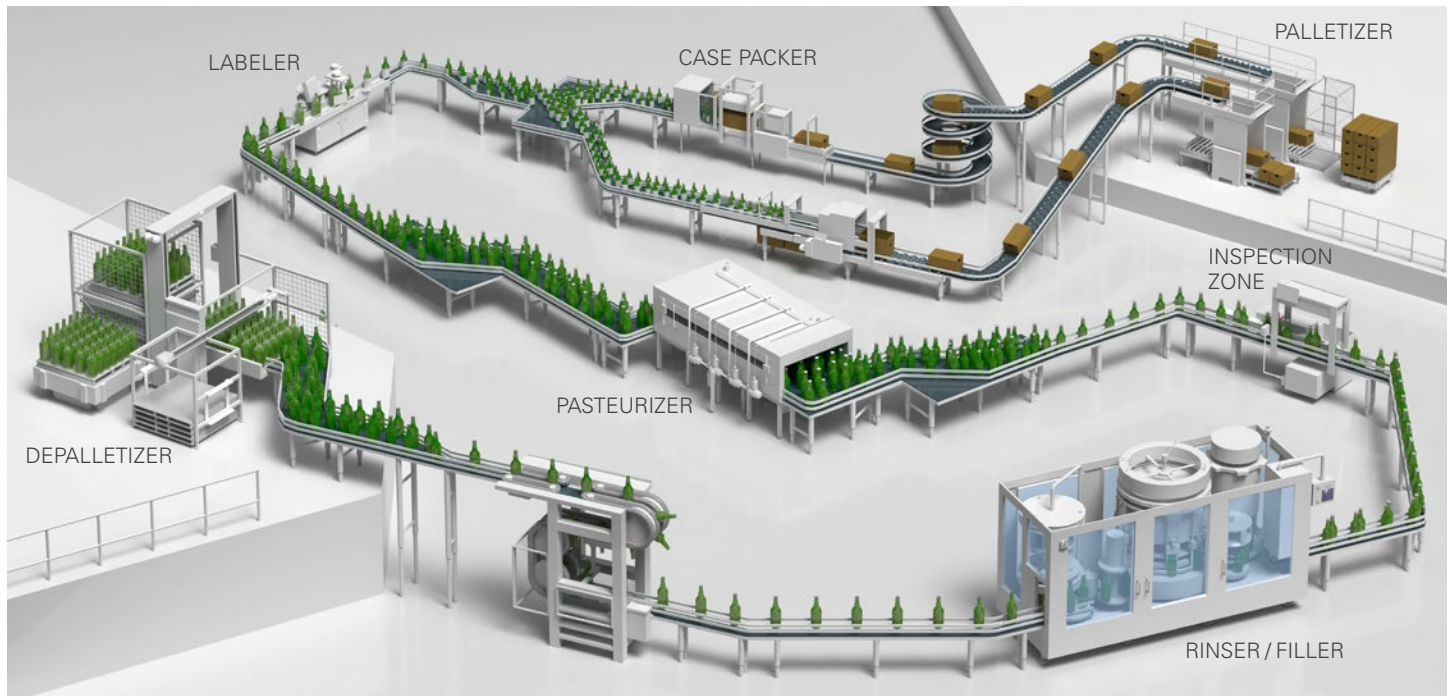
Rex™ Roller Chain	●	●	●	●	●	●	●	●	●	●
Link-Belt Roller Chain	●	●			●			●		●
RexPlus™ Roller Chain	●		●	●	●	●		●		●
TB Wood's™ Synchronous Belt Drives					●				●	●

PERCEPTIV™ INTELLIGENT RELIABILITY SOLUTIONS

Remote Condition Monitoring Services	●	●	●	●	●	●	●	●	●	●
--------------------------------------	---	---	---	---	---	---	---	---	---	---

GLASS BOTTLE FILLING

Like PET bottles and cans, the glass bottle filling process has its own unique requirements and challenges. Material consideration is essential in the filling process to prevent breakage – glass bottles typically require changes in speed and precision throughout the line to account for material durability, weight, and more. Glass bottles are typically used for products like beer, wine, liquor, [some] carbonated beverages, juices and pickling liquids.



GLASS BOTTLE FILLING APPLICATIONS

Regal Rexnord Products

Depalletizer	Rinser	Filler	Tunnel Pasteurizer	Accumulation Table	Labeler	Inspection Zone	Case Packer	Palletizer
--------------	--------	--------	--------------------	--------------------	---------	-----------------	-------------	------------

BEARINGS

Link-Belt™ & Sealmaster™ Mounted Ball Bearing (CRES and standard)	●	●	●	●	●	●	●	●
Rollway™ Unmounted Bearings			●					
McGill Cam Followers	●				●		●	●
McGill CRES Cam Followers & Unmounted Bearings			●					
Kilian™ "No Rust" Housed Bearing Units	●	●	●	●	●		●	●
Kilian Custom Bearings	●	●		●	●	●	●	●

CLUTCHES & BRAKES

Stromag™ Limit Switches	●						●	●
Warner Electric™ Magnetic Capping Headsets and Chucks			●					
Warner Electric Electro Pack Clutch/Brakes		●	●	●			●	
Warner Electric Wrap Spring Clutches	●	●	●	●	●	●	●	●
Stearns™ Electromagnetic Motor Brakes				●		●	●	
Stearns SINPAC™ Electronic Start Switches	●	●	●	●	●	●	●	
Rexnord Autogard™ Torque Limiters			●		●		●	
Stieber™ Overrunning Clutches			●					

GLASS BOTTLE FILLING APPLICATIONS

Regal Rexnord Products

Depalletizer	Rinser	Filler	Tunnel Pasteurizer	Accumulation Table	Labeler	Inspection Zone	Case Packer	Palletizer
--------------	--------	--------	--------------------	--------------------	---------	-----------------	-------------	------------

CONVEYING CHAINS & COMPONENTS

Rexnord™ Curve System with 1540 Series MatTop™ Chain	●						●	
Rexnord 1533 Series MatTop Chain	●						●	
Rexnord 1600 Series KleanTop™ Belt							●	
Rexnord 6997 Series MatTop Chain			●	●				
ValuGuide™ Bead Wall			●	●			●	
System Plast™ Nolu-S™/Nolu-SR™ Material	●	●	●	●	●	●	●	
ValuGuide Guide Rails	●	●	●	●	●	●	●	
ModSort™ Divert and Transfer Module							●	
System Plast 2120 Series Belt			●	●			●	
Rexnord 7700 Series MatTop Chain	●		●	●		●	●	●
Rexnord 880 & 882 Series TableTop Chain			●		●	●		
Rexnord 7950 Series MatTop Chain							●	
Rexnord 1873 SideGrip TableTop Chain [1873 Gripper Chain (TT)]		●	●			●		
Rexnord 820 Series TableTop Chain			●		●	●		
Rexnord 1500 Series MatTop Chain			●	●			●	
Rexnord 8500 Series MatTop Chain	●		●	●	●	●	●	●
System Plast NG™ Evo Chain	●	●	●	●	●	●	●	
Rexnord Dry Run Metal TableTop					●	●		

GEAR & MOTOR

Bauer Gear Motor™ BG Series Inline Helical Geared Motor	●		●		●	●	●	
Bauer Gear Motor BF Series Shaft Mounted Geared Motor	●		●		●	●	●	
Bauer Gear Motor BK Series Helical Bevel Geared Motor	●	●	●	●	●	●	●	
Bauer Gear Motor BS Series Helical Worm Geared Motor	●	●	●		●	●	●	
Bauer Gear Motor HiflexDRIVE Standard Gear Motors			●		●	●	●	
Bauer Gear Motor HiflexDRIVE Aseptic Gear Motors		●	●	●	●		●	
Bauer Gear Motor HiflexDRIVE Stainless Steel Gear Motors		●	●	●	●		●	
Grove Gear™ WASHGUARD™ EL Platinum Series	●		●		●	●	●	
Grove Gear WASHGUARD Painted Gear Reducer	●		●	●	●	●	●	
Grove Gear WASHGUARD SS (Stainless Steel)		●	●		●		●	
Grove Gear Stainless Steel Ratio Multiplier			●				●	
HERA™ Stainless Steel Gear Drives		●	●	●	●		●	
Boston Gear™ 700 Series / QC700 Series	●		●		●	●	●	
Boston Gear Gen2 SS700 Series Stainless Steel Worm Gearbox		●	●		●		●	
Boston Gear SS2000R Helical Bevel Gear Drive		●	●	●	●		●	
Boston Gear SS2000 Series Helical In-Line Gear Drives			●				●	
LEESON™ Extreme Duck™ Ultra Motor		●	●	●	●	●	●	

INDUSTRIAL CHAIN & BELT DRIVES

Rex™ Roller Chain	●	●	●	●	●	●	●	●
Link-Belt Roller Chain	●					●		●
RexPlus™ Roller Chain	●	●	●	●	●	●		●
TB Wood's™ Synchronous Belt Drives							●	●

PERCEPTIV™ INTELLIGENT RELIABILITY SOLUTIONS

Remote Condition Monitoring Services	●	●	●	●	●	●	●	●
--------------------------------------	---	---	---	---	---	---	---	---

FILLING LINE SOLUTIONS BUILT
WITH **RELIABLE PRODUCTS** THAT
REQUIRE **MINIMAL SERVICE.**



VALU GUIDE™

REXNORD™

SEALMASTER™

**HUB CITY™
PERCEPTIV™**



At Regal Rexnord, we are committed to creating a better tomorrow through continuous innovation, sustainability, and customer success

As a global leader in highly engineered motion control systems, air moving solutions, and power transmission components we offer sustainable, innovative solutions that ensure efficiency, reliability, and performance.

Integrity, responsibility, and a passion to win is the foundation of who we are. We value our associates, creating a diverse, engaged, and inclusive work environment that drives innovation and excellence. As your trusted advisor we offer unparalleled expertise and support, helping to unlock peak performance and build stronger businesses. Whether through cutting-edge technology or comprehensive service offerings, Regal Rexnord is proud to be a reliable partner in your progress.

We have deliberately curated our portfolio to better serve the evolving needs of our customers and stakeholders through the merger of Regal Beloit and Rexnord PMC, as well as the acquisition of Altra Industrial Motion. Our broad

portfolio of components and condition monitoring solutions empower customers to build smarter factories, improve operational efficiency, and lead the future of manufacturing.

With a global presence and decades of deep industry expertise, Regal Rexnord is uniquely positioned to provide comprehensive, integrated solutions that enhance performance at every level. From design and sourcing to installation and condition monitoring, our expert teams are dedicated to optimizing your operations and supporting your long-term success.

Together through innovation, collaboration, and a shared vision for a brighter future, **we create a better tomorrow.**



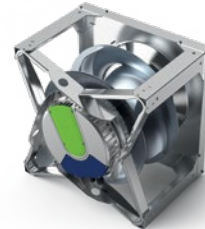
OPERATING SEGMENTS



AUTOMATION & MOTION CONTROL



INDUSTRIAL POWERTRAIN SOLUTIONS



POWER EFFICIENCY SOLUTIONS

Regal Rexnord provides you with unparalleled support and expertise through our team of:



1200+
SALES
PROFESSIONALS



800+
CUSTOMER CARE
ASSOCIATES



1800+
EXPERT
ENGINEERS



Creating a comprehensive team of trusted advisors across:

30 FOCUSED INDUSTRIES
100+ UNIQUE APPLICATIONS
60 TRUSTED BRANDS
19 PRODUCT CATEGORIES
100+ PRODUCTS

REGAL REXNORD

POWERTRAIN SOLUTIONS

You have challenges. **We have solutions.**

To solve your critical challenges, it is essential to partner with a **global company** with **local resources**, **reputable brands**, and a **proven history** of delivering cost-efficient solutions.



**SIMPLIFIED
SUPPLY CHAIN**



**TRUSTED
ADVISOR**



**APPLICATION
ENGINEERING**



**GLOBAL
PRESENCE**



**CONTINUOUS
INNOVATION**

Any Beverage Line, Any Application.

Get started at **RegalRexnord.com/Beverage**

Looking to gain control of your time?

To help find the best solution to meet your production requirements, schedule a Gap Walk™ Consultation with our team of efficiency experts. This consultation will be broken out into three phases:

- 1) Listen and learn your key plant and corporate objectives.
- 2) Conduct a thorough plant walkthrough to review areas of concern and identify issues.
- 3) Identify priorities and create a proposal to earn you the best return on your time and money.

Regal Rexnord

Customer Service: 800-626-2120

Technical Service: 800-626-2093

CustomerService.PTSolutions@regalrexnord.com

regalrexnord.com

The proper selection and application of products and components, including assuring that the product is safe for its intended use, are the responsibility of the customer. To view our Application Considerations, please visit <https://www.regalrexnord.com/Application-Considerations>.

To view our Standard Terms and Conditions of Sale, please visit <https://www.regalrexnord.com/Terms-and-Conditions-of-Sale> (which may redirect to other website locations based on product family).

"Regal Rexnord" is not indicative of legal entity. Refer to product purchase documentation for the applicable legal entity.

Regal Rexnord, Autogard, Bauer Gear Motor, Boston Gear, Extreme Duck, Grove Gear, HERA, Kilian, KleanTop, LEESON, Link-Belt, MatTop, McGill, ModSort, NG, Nolu-S, Nolu-SR, Perceptiv, Rex, Rexnord, RexPlus, Rollway, Sealmaster, SINPAC, SS Gold, Stearns, Stieber, Stromag, System Plast, TableTop, TB Wood's, ValuGuide, and Warner Electric are trademarks of Regal Rexnord Corporation or one of its affiliated companies.

© 2025 Regal Rexnord Corporation, All Rights Reserved. MCB-11020-C-EN-US 08/25

